

---

Hong Kong Head Office:  
Unit 3, 6/F, Kam Hon Industrial Building, 8 Wang  
Kwun Road, Kowloon Bay, Hong kong  
Tel: +852 3050 4277

Australia Office:  
13/2 Conie Ave, Baulkham Hills 2153, NSW, Australia  
Tel: +614 2454 7020

Canada Office:  
4353 W 9th, Avenue, Vancouver, B.C., Canada  
Tel: +604 3366 222

Beijing Office:  
Room 4230, Building 142, Jinyuziyouzhu, Beijing, China

Shanghai Office:  
Rm C01 1st floor, Ruihua building, No. 5, lane 767, queensway,  
Changning district, Shanghai, China

Guangzhou Office:  
B9, North Island Park, 51 XinGang East Road, Guangzhou, China

Hotline: 400-6969-681

PAR-  
TITION  
W-  
ALL

UVO

L-Series





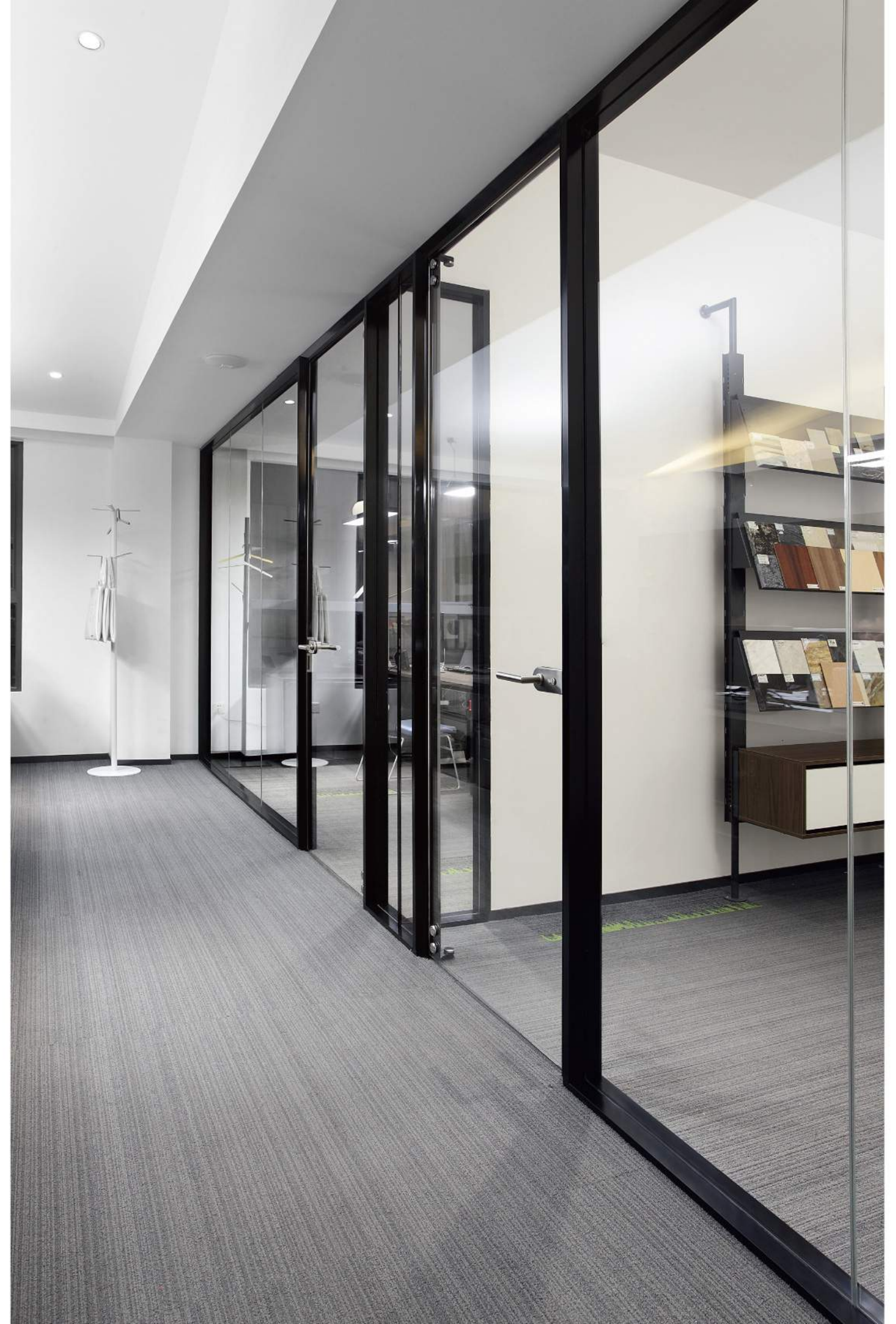
L-100

BLAST OF FLA



## CENTERED SINGLE GLAZING

As the most traditional form in the Light Series, centering is not lowering the technical level; instead UVO insists on making the perfect products by choosing the artwork-class materials for the glass partitions.







## DOUBLE GLAZING & TWO-WAY CABINET



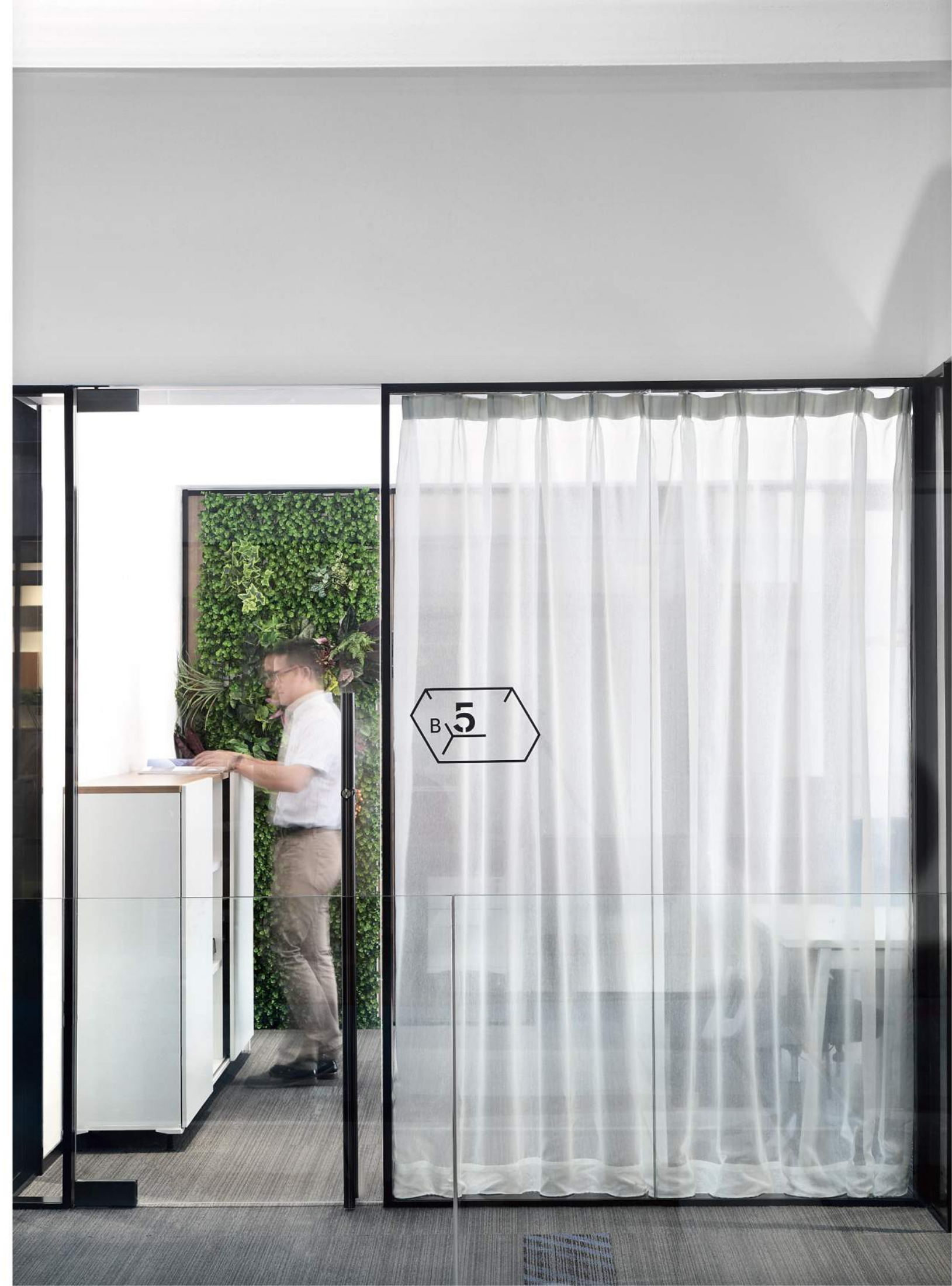
The outstanding sound insulation of double glazing system together with the design of two-way cabinet reaches the ultimate vision—lighting and space utilization.





## BIASED SINGLE GLAZING & GAUZE CURTAINS

As a breakthrough for traditional positioning forms of single glazing, biasing creates a uniform visual sense. The application of gauze curtains softens the overall office atmosphere and freely adjusts the space attribute - open or private.





## IRREGULAR PARTITION

Not only does UVO implement regular space layouts, but also applies such irregular forms as inclined and curved surfaces to create a more flexible and active atmosphere in the space and to present the unique brand temperament of UVO.





# BIASED AND CENTERED SINGLE GLAZING & DOUBLE-LAYER SOLID PANELS

The glass modules are connected without visible vertical joints, only to make a more transparent vision; the visible surface between glass and solid panel is 3mm only; the visible surface of Light Series main frame is 25mm, reaching the limit of the industry. UVO cares for every millimeter of visual experience and technical upgrade.



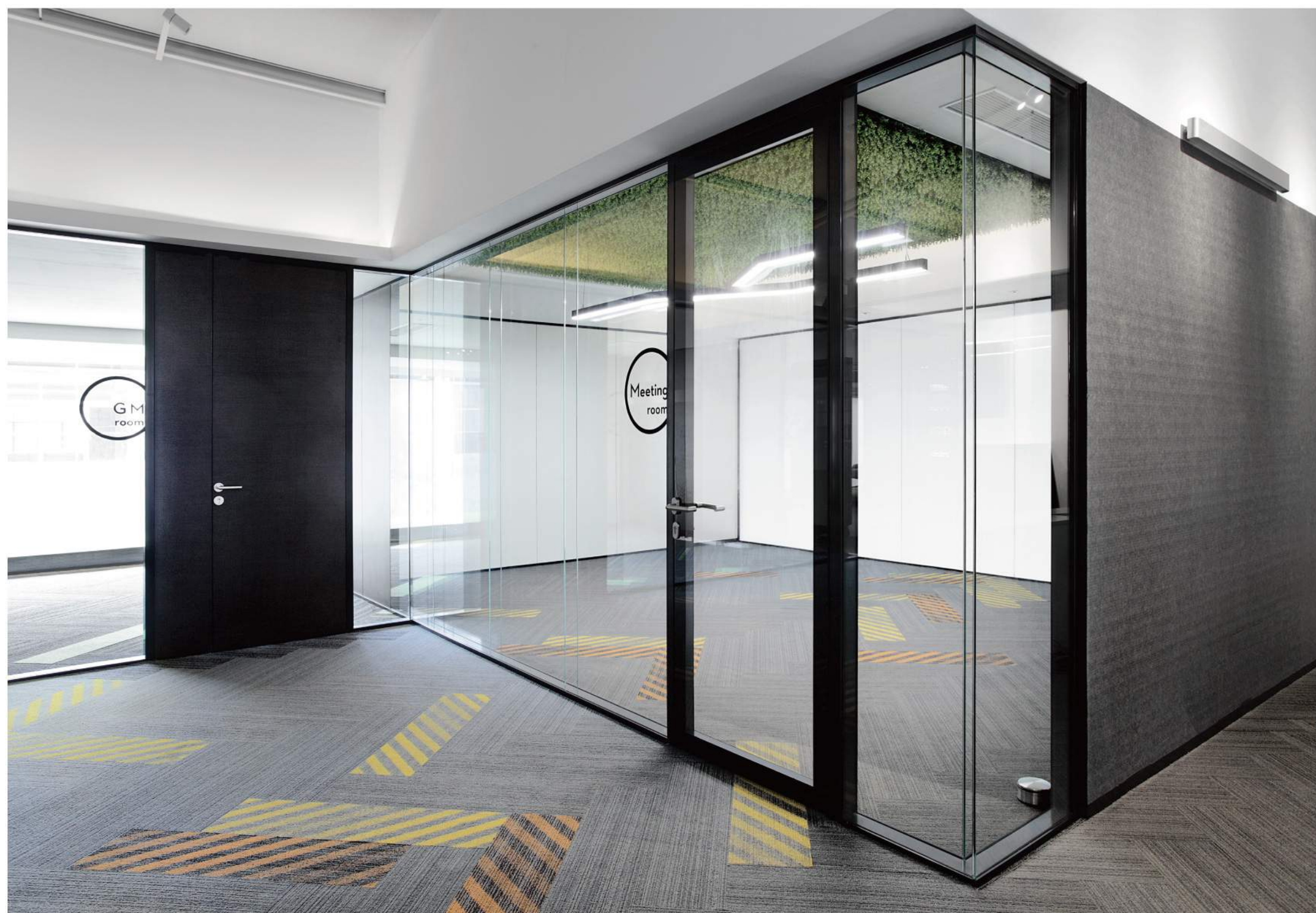


# DOUBLE GLAZING AND DOUBLE- LAYER SOLID PANELS

To fit various functional spaces, the solid panel series of Light Series provide perfect solutions. Through applying solid panels of different textures and colors, the design collocation of shapes and colors can build a harmonious effect in the space and utmostly ensure the visual design requirements.





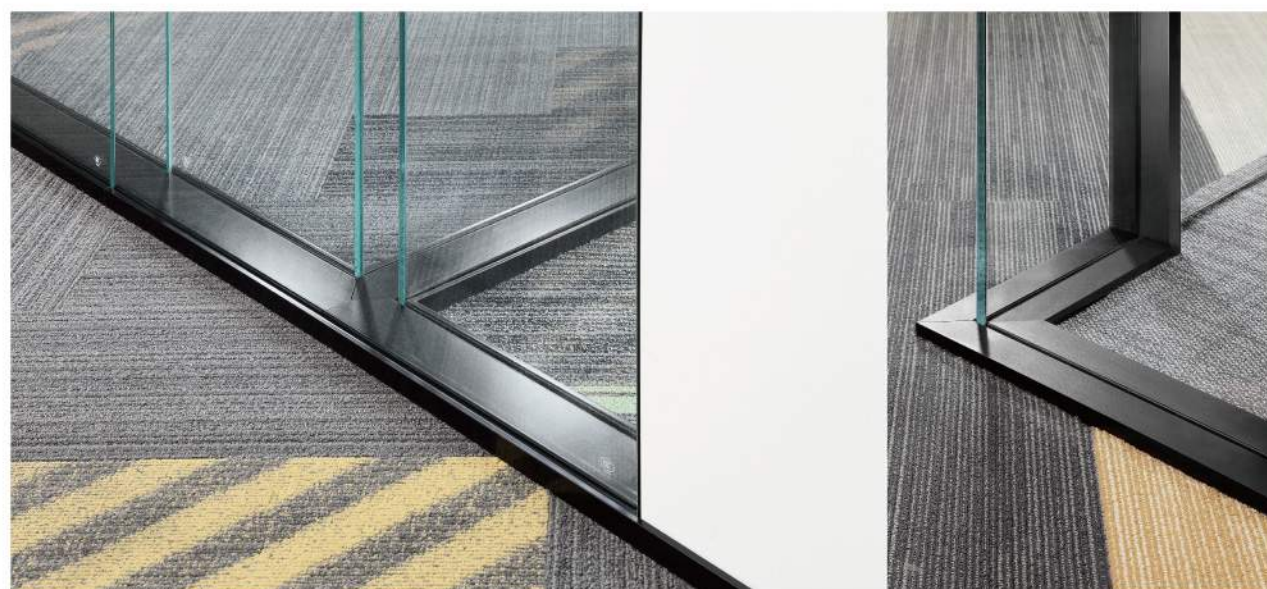


EXQUISITE  
JOINTS  
FOR DOUBLE  
GLAZING



## EXQUISITE JOINTS FOR DOUBLE GLAZING

The L and T shaped joints of Light Series glass are directly jointed with 45° glass cutting technique, so as to guarantee visual unity and the best transparency, as well as to meet the customers' exquisite requirements for product details.









L-65







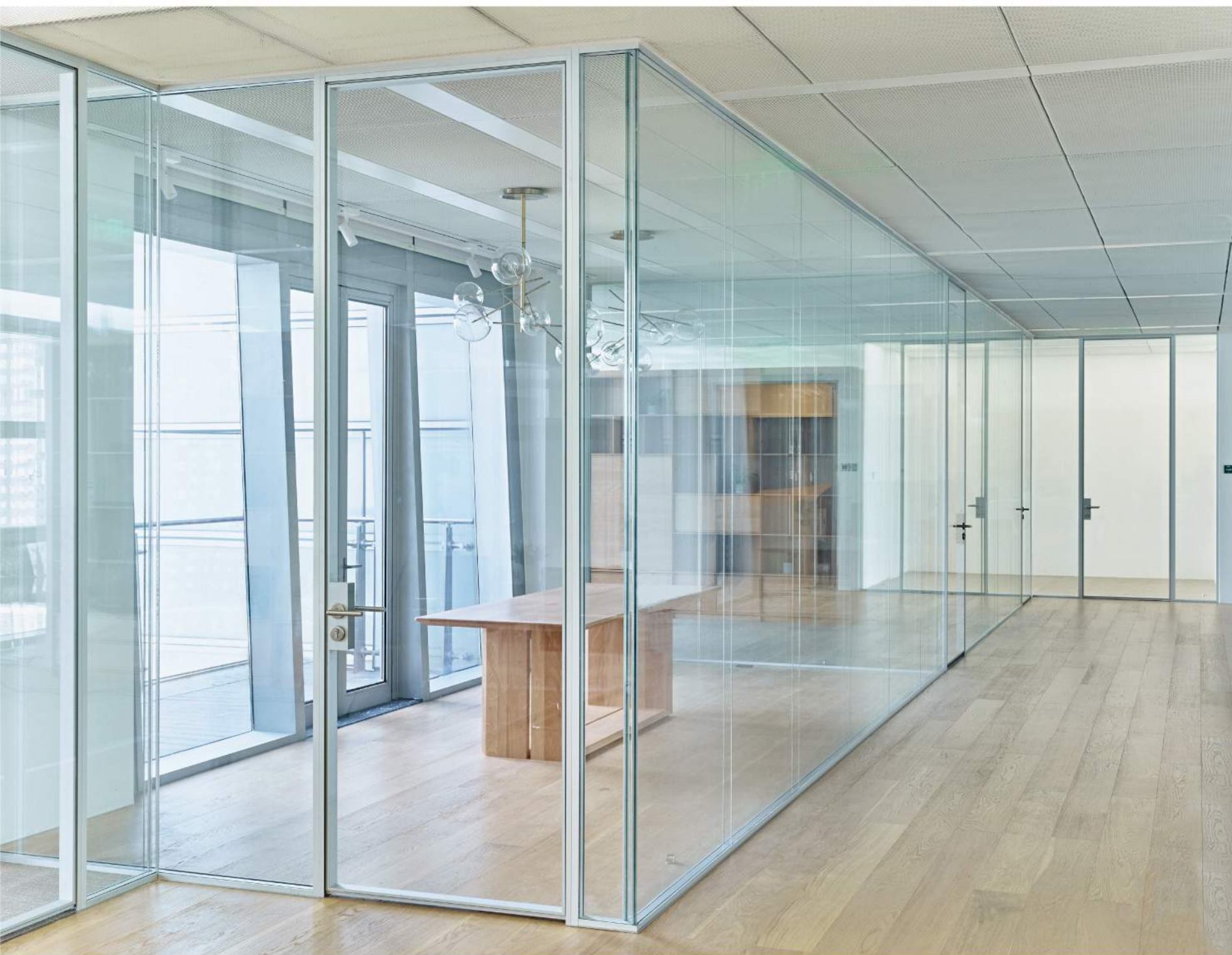
In areas where space is relatively tight, visual simplicity is especially important to avoid sense of narrowness brought by partitions, thus Light 65 was born, for the pursuit of space utilization and visual sense.

The hope for a lighter idea has created countless problems, and technological breakthroughs take time to solve, UVO finally came up with satisfying solutions.

Light 65 displays the ultimate in slimness of Light Series, removing the visual influence of space partitions to the maximum extent.







## LIGHT 65 COMBINES PERFECTLY WITH 65 DOOR SYSTEM UNIQUELY DESIGNED BY UVO

The functional and minimalist senses match flawlessly, retaining maximum lighting when achieving the best sound insulation effect to meet the demanding require of modern space design.







The exquisite joints realize interlaced reflection of light and shadow in the internal space, and the light reaches the maximum utilization due to the increased transparency and slimness, thus bringing agility with infinitely simplified vision.

---



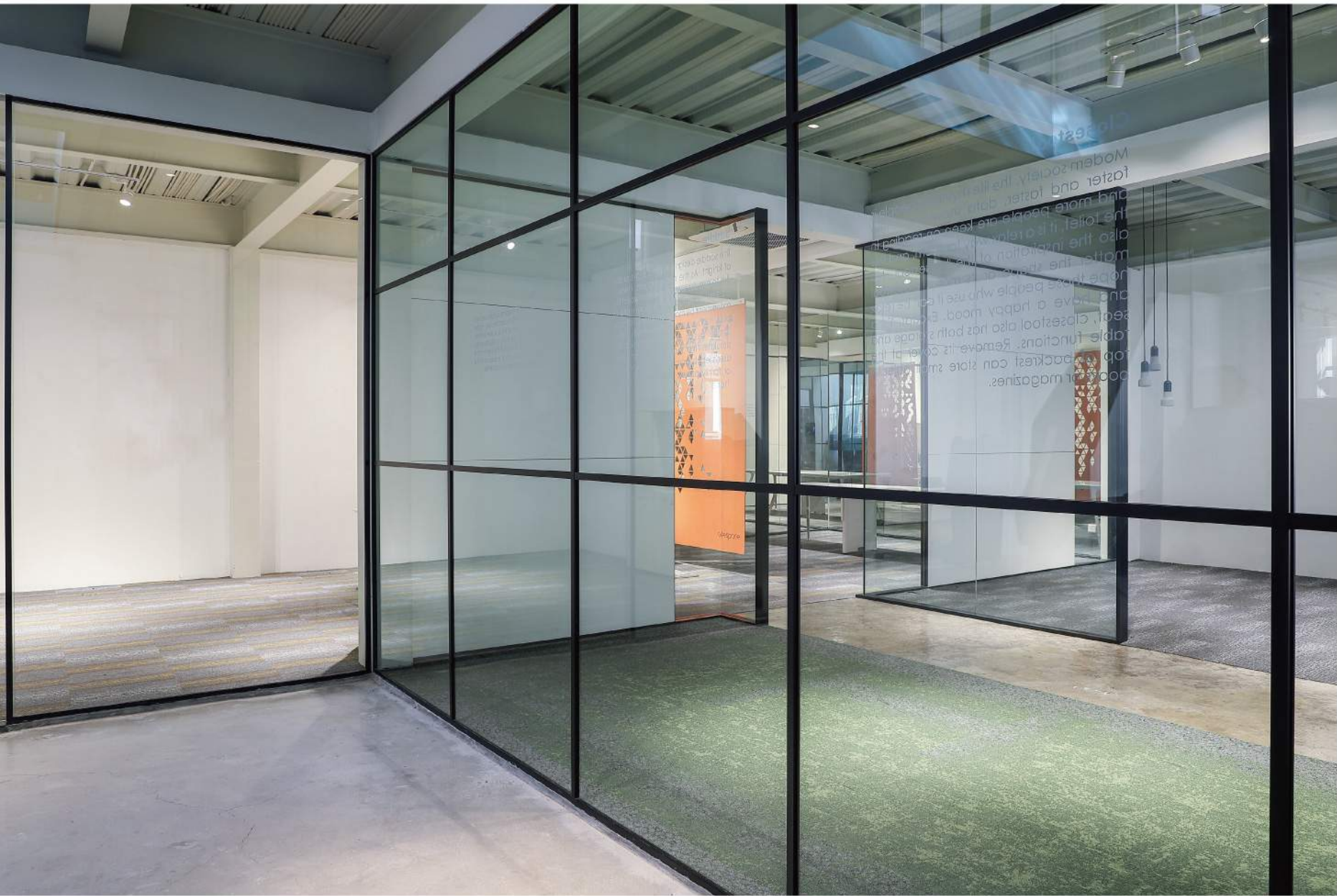
The combination of solid panels and glass with transparent area reserved keeps uniform optical sense.

---









Light 27 is one of the most creative elements in the Light series and can be designed in a variety of shapes to present the overall artistic sense of the space and to facilitate the creation of a space design atmosphere, and according to the space design requirements can be matched with the sliding door, the automatic door and so on, saving the space to the maximum extent.





# SWITCHABLE GLASS SYSTEM







Adopting switchable glass, Light Series can turn from transparent to private status in a second; a smart control system can be realized through overall planning and design by UVO, instantly responding to various demands for office space.



# SWITCHABLE GLASS SYSTEM





MATERIAL  
HARD  
-WARE  
PANEL





# MATERIAL HARD -WARE PANEL

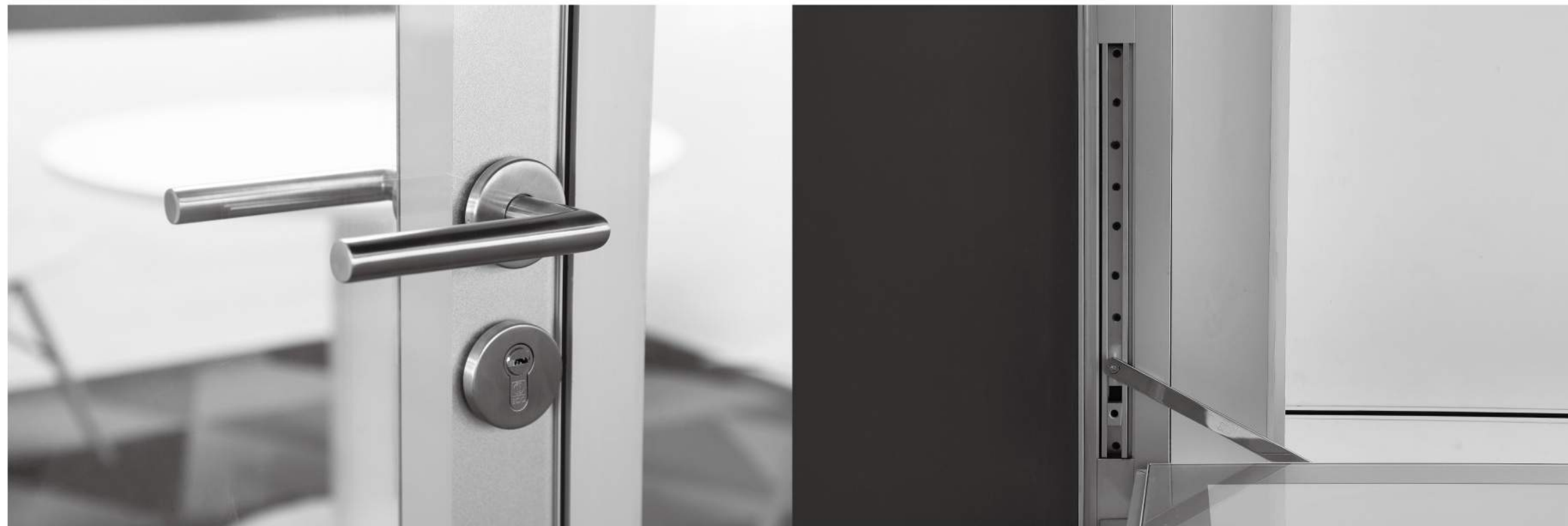


On the basis of the Light and Simple vision, to create a more integrated space atmosphere, we match the special Light Series metal fittings, which not only satisfy the enjoyment in sense, but are also endurable with smooth user's experience.





# MATERIAL HARD —WARE PANEL





## UVO Group

Headquartered in Hong Kong, UVO International Company ("UVO") is a cutting-edge brand enterprise that focuses on interior and exterior wall product systems, integrating technical R&D, design, innovation, sales and services.

With long-term dedication to research on the trends of mainstream interior and exterior wall product systems in the world, UVO has developed several such systems that are more adaptable to the characteristics of the Asian market based on the habits and demands of the users in Greater China and Southeast Asia.

## L-Series

The Light series stems from the desire for limitless simplification of lines, a protest against the visual constraints of the crisscrossing of traditional partitions.

After years of research and development, we breakthrough technical difficulties, gradually from the reduction of lines to the pursuit of slimmer and more transparent senses. Whether private or open, whether soundproofed or decorative, the light series has a variety of products to choose from, forming a complete space system, and proposing a new way of thinking about space utilization.